



# PREMIER™ SERIES

## Classroom Desks



888-627-2601 | [madebymarco.net](http://madebymarco.net)

Scan now to learn more.





## Strength you can count on.

The Premier desk Series combines clean design with classroom-tough construction. Adjustable round legs offer a modern look with reliable steel-on-steel mounting, while built-in stretchers and leveling glides keep things steady.

With easy assembly and height flexibility (21"–31"), these tables are ready to support collaboration, projects, and everyday learning—no matter the setup.

### Accessories sold separately:



Backpack Hook



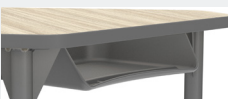
Locking Casters



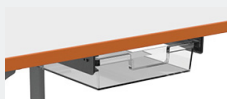
2-Sided Book Box



Wire Book Box



Black or Gray Book Box



Markerspace Tray Mount Kit



**Sitting Height Leg**  
Adjust from 21" - 31"

**Standing Height Leg**  
Adjust from 32" - 42"

## FEATURES

- Top constructed of 11/8" particleboard with thermally fused melamine surface on both sides
- 3mm PVC edge banding bonded with hot-melt adhesive
- Pre-drilled holes for easy leg assembly
- Upper leg constructed of 16-gauge, 2" round steel mounted on a 12-gauge steel plate, fully coated with a powder coat finish
- Lower adjustable leg constructed of 16-gauge steel with a chrome-plated finish, tapped at 1" intervals for adjustment from (21"–31" heights)
- 16-gauge 1" square tubular steel stretcher attached to all tables 54" in length or longer
- Adjustable nylon glides allow for easy floor leveling
- UL GREENGUARD GOLD Certified

## SPECIFICATIONS

### TABLETOP LAMINATE OPTIONS

	Fusion Maple		Pewter Mesh		High Rise		Solar Oak
	Wild Cherry		Weathered Teak		New Age Oak	*Matching edgeband available for all laminates except Gray Nebula	
	Asian Night		Boardwalk Oak		Gray Nebula		

### LEG COLORS

	Black
	Gray

### DRY ERASE OPTIONS

	Glacier White		Mirage		White Dry Erase HPL
	Evergreen Mist		Ocean	HPL (High Pressure Laminate) available upon request. Must order a minimum of 25 units in the same color.  *White Dry Erase laminate not available with matching edgeband. Please select from optional edgeband colors.	
	Inspid		Tsunami		

### EDGE BAND COLOR OPTIONS\*

	Black		Blue		Red
	Gray		Apple		Orange
	Navy		Blueberry		Purple

**Desk Worksurface (Rectangle):**  
30"W x 20"D | 36"W x 20"D  
30"W x 24"D | 36"W x 24"D

**Desk Worksurface (Curve):**  
28"W x 24"D

**Desk Worksurface (Contour):**  
28"W x 24"D

**Desk Worksurface (Gem):**  
29 3/4"W x 33 1/2"D

**Desk Worksurface (Triangle):**  
41"W x 23"D

**Desk Worksurface (Flare):**  
30"W x 24"D

**Desk Worksurface (Chevron):**  
30"W x 25"D | 3"W x 31"D

**Desk Worksurface (Trapezoid):**  
31"W x 20"D  
32"W x 22"D  
36"W x 23"D

**Warranty:** 10 Years

Worksurfaces are UL Greenguard Gold certified