



APEX™ SERIES

Classroom Desks



MARCO™
Environments for Learning



888-627-2601 | madebymarco.net

Scan now to learn more.



Built for the way students learn.

The Apex Series Desk brings flexibility to the forefront with adjustable legs, space-conscious shapes, and smart add-ons that support real classroom needs.

From solo focus to group work, it's easy to configure and easy to customize—with multiple laminates, edge banding colors, and optional book boxes, casters, and hooks. Compact, adaptable, and always ready to work.

Accessories sold separately:



Backpack Hook



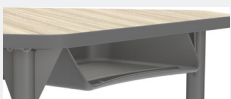
Locking Casters



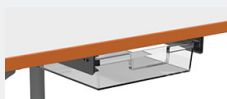
2-Sided Book Box



Wire Book Box



Black or Gray Book Box



Markerspace Tray Mount Kit



Standard Leg
Adjust from 21" - 30"

Toddler Leg
Adjust from 17" - 24"

FEATURES

- Top constructed of 1 1/8" particleboard with thermally fused melamine surface on both sides
- 3mm PVC edge banding bonded with hot-melt adhesive
- Pre-drilled holes for easy leg assembly
- 1" 16-gauge square tubular steel support bar attached to all tables 54" in length or longer
- Four 16-gauge steel legs mounted on a 12-gauge steel plate, fully coated with a durable powder coat finish
- Lower adjustable legs constructed of 16-gauge steel with a durable powder coat finish, tapped at 1" intervals for adjustment from 21" – 30" heights
- Nickel plated nylon swivel glides standard
- UL GREENGUARD GOLD Certified

SPECIFICATIONS

TABLETOP LAMINATE OPTIONS

	Fusion Maple		Pewter Mesh		High Rise		Solar Oak
	Wild Cherry		Weathered Teak		New Age Oak	*Matching edgeband available for all laminates except Gray Ne=ba	
	Asian Night		Boardwalk Oak		Gray Nebula		

LEG COLORS

	Black
	Gray

DRY ERASE OPTIONS

	Glacier White		Mirage		White Dry Erase HPL
	Evergreen Mist		Ocean	HPL (High Pressure Laminate) available upon request. Must order a minimum of 25 units in the same color. *White Dry Erase laminate not available with matching edgeband. Please select from optional edgeband colors.	
	Inspid		Tsunami		

EDGE BAND COLOR OPTIONS*

	Black		Blue		Red
	Gray		Apple		Orange
	Navy		Blueberry		Purple

Desk Worksurface(Rectangle):
30"W x 20"D | 36"W x 20"D
30"W x 24"D | 36"W x 24"D

Desk Worksurface (Curve):
28"W x 24"D

Desk Worksurface (Contour):
28"W x 24"D

Desk Worksurface (Gem):
29 3/4"W x 33 1/2"D

Desk Worksurface (Triangle):
41"W x 23"D

Desk Worksurface (Flare):
30"W x 24"D

Desk Worksurface (Chevron):
30"W x 25"D | 3"W x 31"D

Desk Worksurface (Trapezoid):
31"W x 20"D
32"W x 22"D
36"W x 23"D

Warranty: 10 Years

Worksurfaces are UL Greenguard Gold certified.